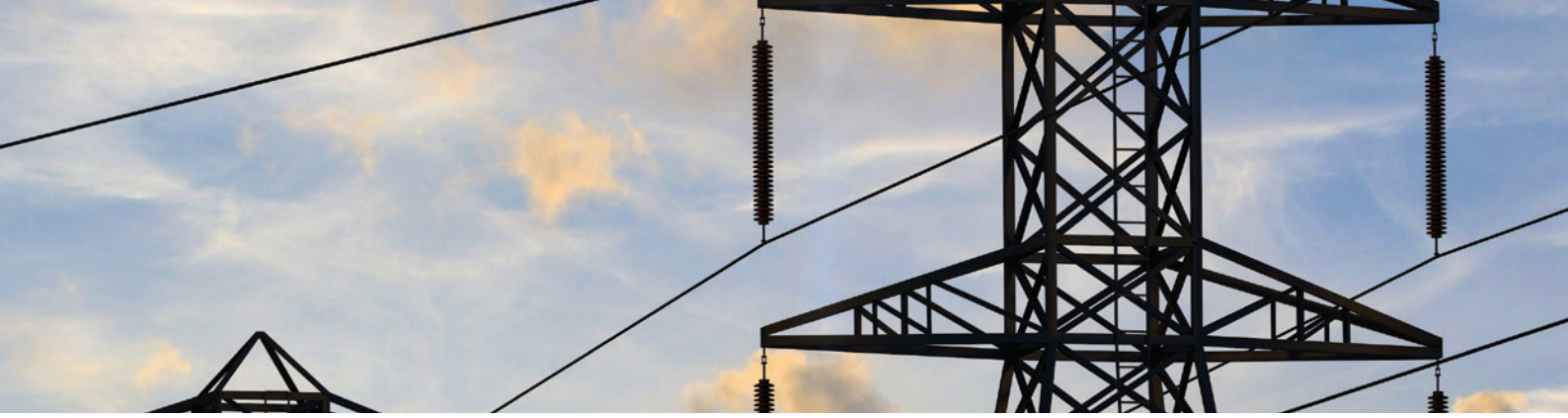




HIGH VOLTAGE CABLE ACCESSORIES

PRODUCTS POWERED BY INNOVATION



BEST-IN-CLASS PRODUCTS FOR YOUR MOST CRITICAL APPLICATIONS

Every high voltage cable connection point is critical, and demands the ultimate in fail-safe electrical contact, mechanical strength and reliability. Connectors must achieve extremes of performance while being quick and easy for crews to safely install in the field.

TE Connectivity meets the challenge with accessories to fit virtually every power cable. For 60 years, our Raychem brand has set the standard for innovation in accessories for power transmission and distribution. When you work with Raychem from TE Connectivity, you know that your connections incorporate the latest advances in materials science, physics, and manufacturing—advances that ensure reliable performance and lower your installation costs.



ENDLESS INNOVATION

WHEREVER YOU FIND INNOVATION IN
HIGH VOLTAGE CABLE ACCESSORIES, YOU FIND
PRODUCTS FROM TE CONNECTIVITY



Raychem from TE Connectivity

Our Raychem brand pioneered heat-shrink technology for energy applications, and ever since the industry has looked to us for the newest advances. This relentless drive to innovate results in high voltage accessories that install as quickly and easily as those rated for medium voltages, and install in 30-50 percent less time than competitive products.

**AT THE
FOREFRONT
WITH EVERY
CONNECTION**

OUR GROUNDBREAKING PRODUCTS INCLUDE:

- **Range taking products** that can fit any type or size cable and work with any installed product
- **Connectors** that use shear-off bolt technology for precise installation in seconds and require no special tools
- **Outdoor terminations** that withstand harsh environments, require no special tools to install, fill from the top and can be raised into place eliminating the need for scaffolding
- **Separable switchgear and transformer terminations** that replace oil-filled designs with a dry interface
- **Flexible, compact cable joints** that integrate electrical performance, stress control and moisture sealing

CONTINUOUS INVESTMENT IN NEW ADVANCES

TE HAS MADE AN EXTENSIVE INVESTMENT IN RESEARCH AND DEVELOPMENT. THIS COMMITMENT ENCOMPASSES:



1,000
PATENTS



180+
ENGINEERS



4
LABS



THE HIGH VOLTAGE LAB IN OTTOBRUNN, GERMANY IS CAPABLE OF PERFORMING A WIDE RANGE OF TESTS AT UP TO 245 KV TENSION

Four separate labs in Europe are dedicated to developing, testing and proving out our innovations. These lab facilities test across the full range of parameters and conditions:

- Impulse level, partial discharge and other key electrical parameters
- Environmental conditions such as temperature
- Chambers for exposure to salt fog or humidity
- Pressure vessels for simulating deep-water conditions

These tests ensure that all of our products meet the exacting performance specifications for reliable high voltage transmission, including specific requirements of our customers.

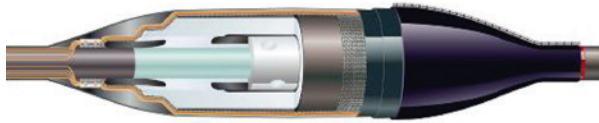
TURNKEY CAPABILITY FOR SINGLE SOURCE CONVENIENCE

Working with key cable manufacturers and the most highly regarded EHV contractors throughout Europe, we provide you with turnkey packages of products and services. These include cable, cable accessories, installation assistance and training for your installers.

Unique to the marketplace, we do all of our own manufacturing to assure quality control. In Europe, we manufacture through a strategically located network of sites that includes three major facilities and five satellites.

Responsive local training and support for your installers ensures you get the reliable, long-life performance that is engineered into Raychem products. For emergencies, a network of strategic locations throughout Europe ensures fastest response.

EHVS-T High Voltage Cable Joint: Ingenuity in Action



Combining advances in materials science with real-world knowledge of what electrical installers need in the field, TE Connectivity has produced one of the industry's highest-performance cable joints. It cuts the time required for cable preparation, and the space-saving design allows smaller joint bays to be built, saving on the time and costs for excavation and soil replacement.

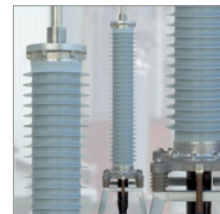
EHVS-T FEATURES:

- Range-taking materials accommodate any size or type of cable on the market
- No special tools required for installation
- Compact design and short cut-back dimension consume less space
- Joint body can be parked over the sheath, for easy installation even in tight spaces

Raychem High Voltage Cable Accessories from TE Connectivity

Outdoor Terminations

- Heat-Shrinkable Terminations for Polymeric and MIND Cables up to 84 kV
- Outdoor Terminations up to 245 kV
- Dry Self-Supporting Outdoor Terminations for 145 kV
- Heat-Shrinkable Terminations for Filter Cables DC up to 150 kV



Switchgear/Transformer Terminations

- Dry Compact Switchgear Terminations
- Dry Compact Transformer Terminations



Joints

- Heat-Shrinkable Joints for Polymeric and MIND Cables up to 84 kV
- Single-Piece Joints up to 245 kV
- Three-Piece Joints up to 170 kV



Link Boxes

- The full range of cable sheath grounding configurations in IP56 or IP68 enclosures



TE Connectivity (NYSE: TEL) is a \$13 billion world leader in connectivity. The company designs and manufactures products at the heart of electronic connections for the world's leading industries including automotive, energy and industrial, broadband communications, consumer devices, healthcare, and aerospace and defense. TE Connectivity's long-standing commitment to innovation and engineering excellence helps its customers solve the need for more energy efficiency, always-on communications and ever-increasing productivity. With nearly 90,000 employees in over 50 countries, TE Connectivity makes connections the world relies on to work flawlessly every day. To connect with the company, visit: te.com.

- Mining
- Nuclear power plants
- OEMs
- Overhead distribution
- Petrochemical plants
- Railways
- Street lighting
- Substations
- Transmission lines
- Underground distribution
- Windfarms
- Solar
- Hydro-electric

WHEREVER ELECTRICITY FLOWS, YOU'LL FIND TE ENERGY



te.com/energy

TE Technical Support Centers

France: + 33 380 583 200

Germany: + 49 896 089 903

UK: + 44 8 708 707 500

Spain: + 34 916 630 400

Middle East: + 971 4 2 117 000

Denmark: + 45 43 480 424

Poland/Baltics: + 48 224 576 753

Czech Republic: + 42 0 272 011 102

Sweden/Norway: + 46 850 725 057

Italy: + 39 333 2500 915

USA: + 1 800 327 6996

te.com/energy

© 2014 TE Connectivity Ltd. family of companies. All Rights Reserved. EPP-2224-7/14

Raychem, TE Connectivity and the TE connectivity (logo) are trademarks of the TE Connectivity Ltd. family of companies. Other logos, product and Company names mentioned herein may be trademarks of their respective owners. While TE has made every reasonable effort to ensure the accuracy of the information in this brochure, TE does not guarantee that it is error-free, nor does TE make any other representation, warranty or guarantee that the information is accurate, correct, reliable or current. TE reserves the right to make any adjustments to the information contained herein at any time without notice. TE expressly disclaims all implied warranties regarding the information contained herein, including, but not limited to, any implied warranties of merchantability or fitness for a particular purpose. The dimensions in this brochure are for reference purposes only and are subject to change without notice. Specifications are subject to change without notice. Consult TE for the latest dimensions and design specifications.